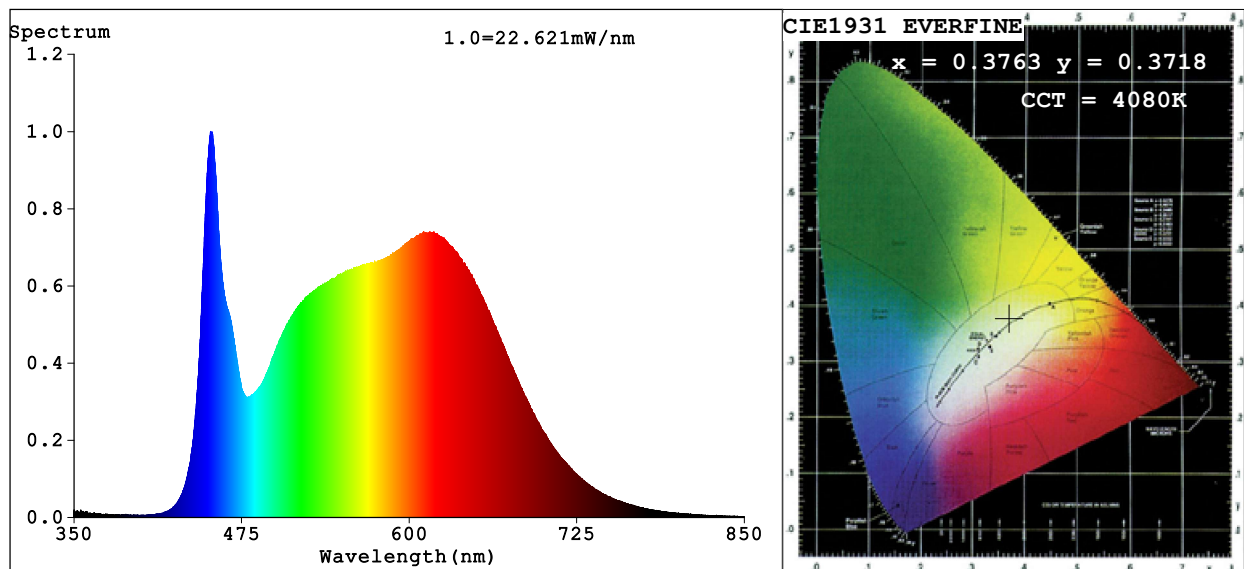


Spectrum Test Report



Color Parameters:

Chromaticity Coordinate: $x=0.3763$ $y=0.3718$ $u'=0.2243$ $v'=0.4987$
 CCT=4080K (Duv=-0.0011) Dominant WL:Ld =579.4nm Purity=24.5%
 Ratio:R=19.8% G=75.8% B=4.4%; Peak WL:Lp=451.9nm FWHM=22.9nm
 Render Index:Ra=94.2 CRI=91.1 TM30:Rf=90 Rg=99
 R1 =95 R2 =97 R3 =97 R4 =94 R5 =94 R6 =94 R7 =95
 R8 =89 R9 =73 R10=92 R11=94 R12=70 R13=96 R14=98 R15=93

Photo Parameters:

Flux = 1025 lm Eff. : 58.34 lm/W Fe = 3.544 W

Electrical parameters:

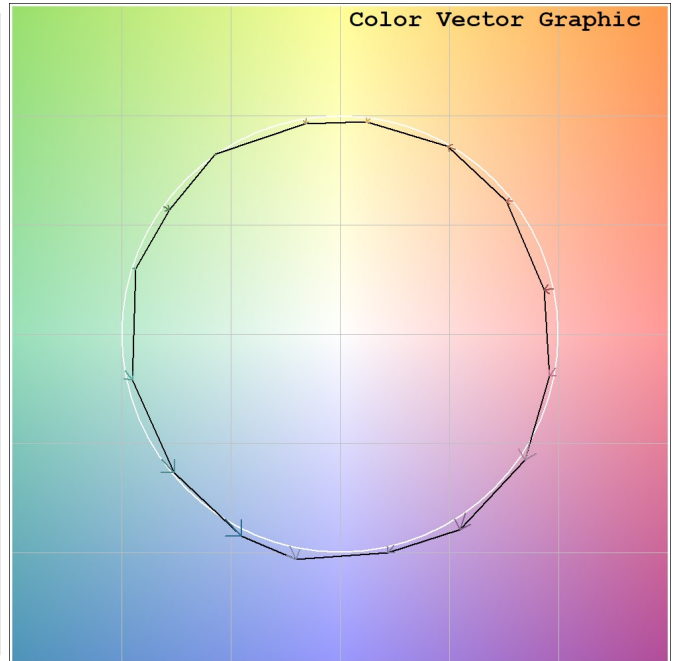
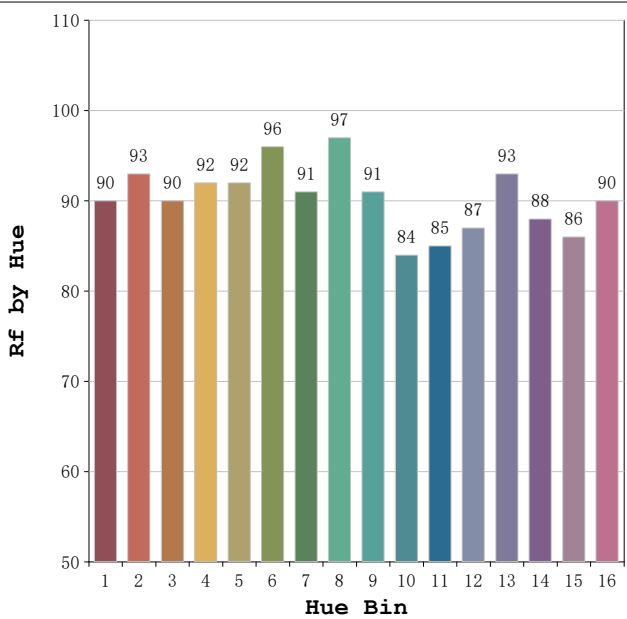
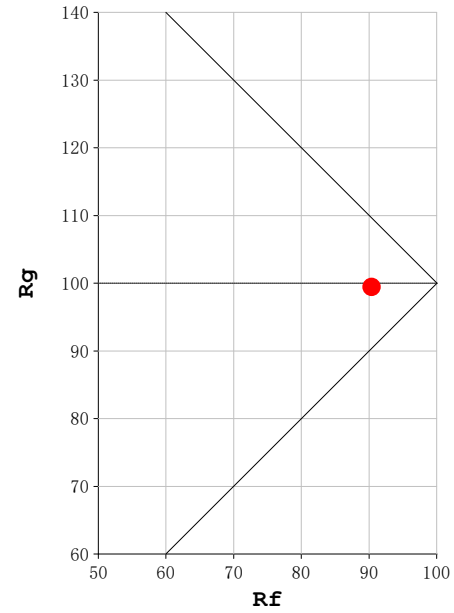
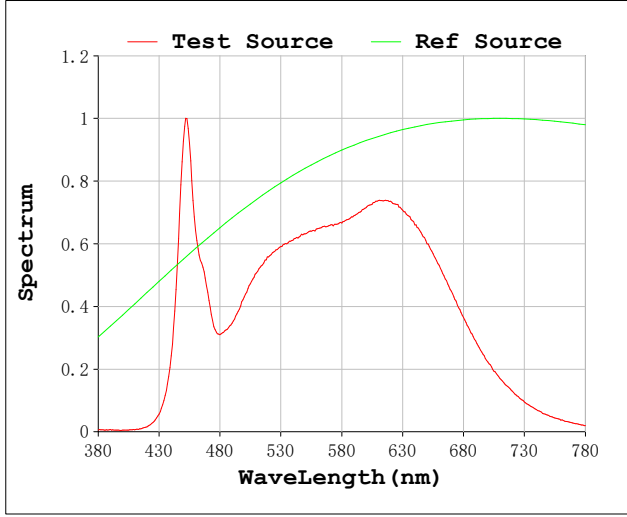
V = 230.07 V I = 0.08589 A P = 17.58 W PF = 0.8894

Status: Integral T = 1562 ms Ip = 47326 (72%)

Model:Spotia Zomm CTT Blanco
 Tester:Sergio Carneros
 Temperature:20Deg
 Manufacturer:Luz Negra

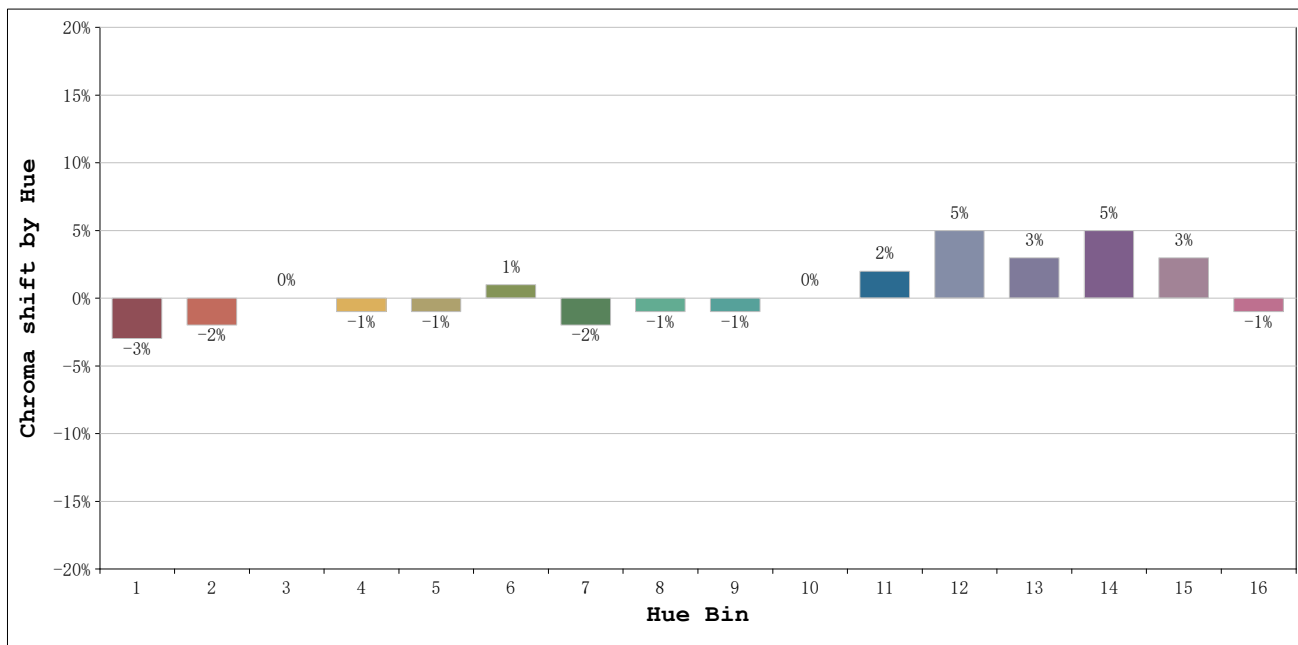
Number:4000k 20° Panal de abeja
 Date:2026-03-23 08:56:57
 Humidity:50%
 Remarks:1 unidad

Rf: 90 **CCT: 4080 K** **u': 0.2243**
Rg: 99 **Duv: -0.0011** **v': 0.4987**



Model:Spotia Zomm CTT Blanco
 Tester:Sergio Carneros
 Temperature:20Deg
 Manufacturer:Luz Negra

Number:4000k 20° Panal de abeja
 Date:2026-03-23 08:56:57
 Humidity:50%
 Remarks:1 unidad

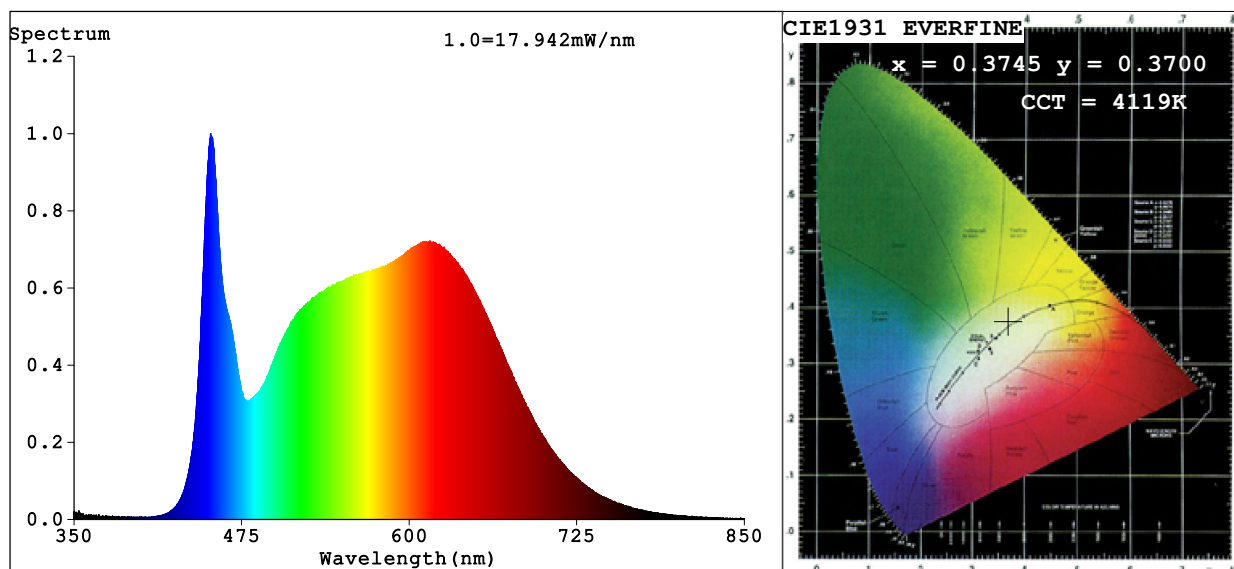


Hue Bin	Hue Angle	Rf	Graphic shift(%)	
			Chroma	Hue
1	0.0° - 22.5°	90	-3	0
2	22.5° - 45.0°	93	-2	2
3	45.0° - 67.5°	90	0	4
4	67.5° - 90.0°	92	-1	1
5	90.0° - 112.5°	92	-1	1
6	112.5° - 135.0°	96	1	0
7	135.0° - 157.5°	91	-2	0
8	157.5° - 180.0°	97	-1	0
9	180.0° - 202.5°	91	-1	5
10	202.5° - 225.0°	84	0	8
11	225.0° - 247.5°	85	2	11
12	247.5° - 270.0°	87	5	4
13	270.0° - 292.5°	93	3	-2
14	292.5° - 315.0°	88	5	-5
15	315.0° - 337.5°	86	3	-7
16	337.5° - 360.0°	90	-1	-3

Model:Spotia Zomm CTT Blanco
 Tester:Sergio Carneros
 Temperature:20Deg
 Manufacturer:Luz Negra

Number:4000k 20° Panal de abeja
 Date:2026-03-23 08:56:57
 Humidity:50%
 Remarks:1 unidad

Spectrum Test Report



Color Parameters:

Chromaticity Coordinate: $x=0.3745$ $y=0.3700$ $u'=0.2239$ $v'=0.4977$

CCT=4119K (Duv=-0.0014) Dominant WL:Ld =579.5nm Purity=23.4%

Ratio:R=19.7% G=75.8% B=4.4%; Peak WL:Lp=451.9nm FWHM=22.8nm

Render Index:Ra=94.2 CRI=91.2 TM30:Rf=90 Rg=100

R1 =95 R2 =97 R3 =97 R4 =94 R5 =94 R6 =94 R7 =95

R8 =89 R9 =73 R10=92 R11=94 R12=70 R13=96 R14=98 R15=94

Photo Parameters:

Flux = 794.9 lm Eff. : 45.28 lm/W Fe = 2.749 W

Electrical parameters:

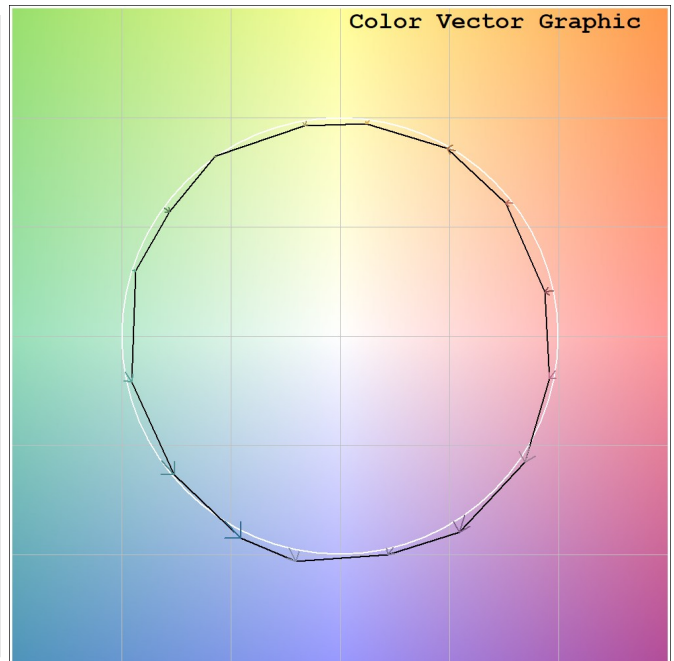
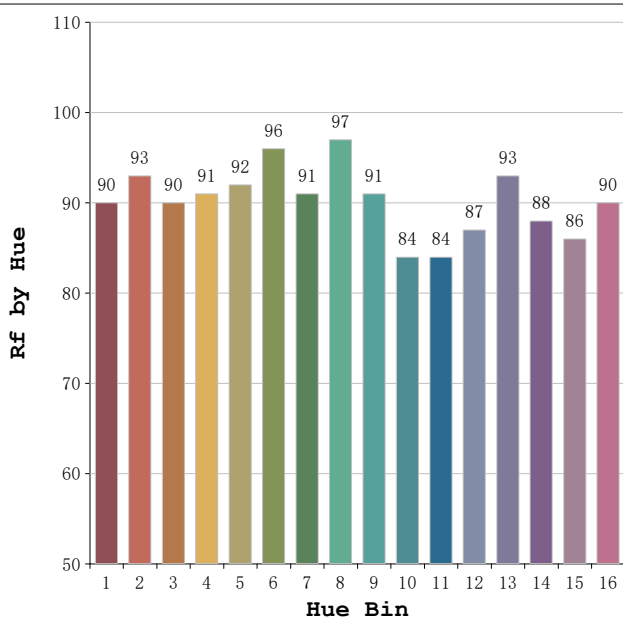
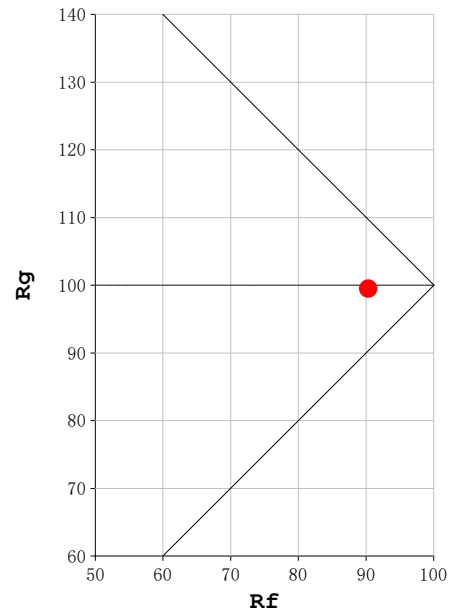
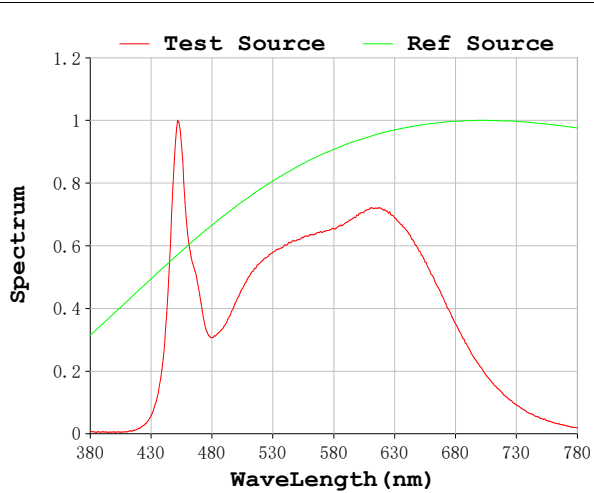
V = 230.08 V I = 0.08581 A P = 17.56 W PF = 0.8892

Status: Integral T = 1562 ms Ip = 36608 (56%)

Model:Spotia Zomm CTT Blanco
 Tester:Sergio Carneros
 Temperature:20Deg
 Manufacturer:Luz Negra

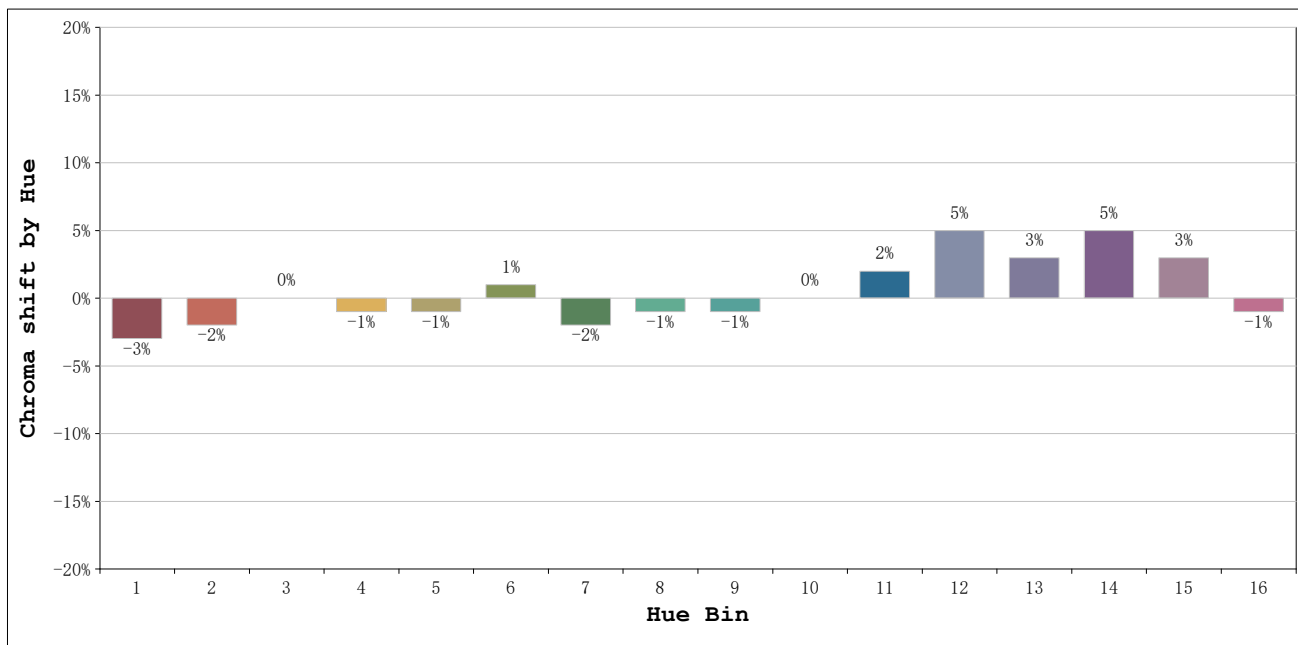
Number:4000k 60° Panal de abeja
 Date:2026-03-23 08:57:31
 Humidity:50%
 Remarks:1 unidad

Rf: 90 **CCT: 4119 K** **u': 0.2239**
Rg: 100 **Duv: -0.0014** **v': 0.4977**



Model:Spotia Zomm CTT Blanco
 Tester:Sergio Carneros
 Temperature:20Deg
 Manufacturer:Luz Negra

Number:4000k 60° Panal de abeja
 Date:2026-03-23 08:57:31
 Humidity:50%
 Remarks:1 unidad



Hue Bin	Hue Angle	Rf	Graphic shift(%)	
			Chroma	Hue
1	0.0° - 22.5°	90	-3	0
2	22.5° - 45.0°	93	-2	2
3	45.0° - 67.5°	90	0	4
4	67.5° - 90.0°	91	-1	1
5	90.0° - 112.5°	92	-1	1
6	112.5° - 135.0°	96	1	0
7	135.0° - 157.5°	91	-2	0
8	157.5° - 180.0°	97	-1	0
9	180.0° - 202.5°	91	-1	5
10	202.5° - 225.0°	84	0	9
11	225.0° - 247.5°	84	2	11
12	247.5° - 270.0°	87	5	4
13	270.0° - 292.5°	93	3	-2
14	292.5° - 315.0°	88	5	-5
15	315.0° - 337.5°	86	3	-7
16	337.5° - 360.0°	90	-1	-3

Model:Spotia Zomm CTT Blanco
 Tester:Sergio Carneros
 Temperature:20Deg
 Manufacturer:Luz Negra

Number:4000k 60° Panal de abeja
 Date:2026-03-23 08:57:31
 Humidity:50%
 Remarks:1 unidad